



# REMHS

Referral English Medium High School

Report 2010

A Concern of Rural India Self Development Trust





## Contents

1. Foreword	5
2. Our School & Our Vision	6
3. Governance and Organization	6
4. Academic Constitution	7
5. Our Staff	7
6. Our Notable Facilities	8
7. Our Distinctive Curriculum Offerings	9
8. Our Teaching Methodology and Practices	10
9. Teaching Quality and Enhancement Program	10
10. Nurturing Student for Life	11
11. School Profile for 2010 and Goals for 2011	12
12. Key Challenges	13
13. Credits and Closing	15

## FOREWORD

### Correspondent

I am pleased to share with you the 2010 Annual Report for Referral English Medium High School (REMHS). The past year has witnessed a remarkable growth in strengthening of the school as the most valuable destination offering affordable and qualitative education for all. During the year, the school has implemented innovative academic programs, procured best resources and extended the reach by attracting parents and students from different parts of the region.

This Report contains details about the achievements our school has attained during 2010 in highest student enrollments and highest maximum marks scored by our students in the SSC board examinations.

Our committed and skillful staff has made the real difference. The report gives an indication of the journey we have travelled and will also allow us to create a plan for the journey ahead. In partnership with parents and the community, REMHS strives to provide students with access to a high-quality education that equips them with the knowledge, skills and attributes, necessary for the future and for a vibrant society.

We believe 2011 offers a lot of promise and we always yearn to do more as there is a lot to be done for the upliftment. We are geared up for the opportunities ahead of us, and eager to move forward on the priorities: innovation in our educational programs, intellectual ambition, international engagement, social inclusion, and integration with more villages by an increased transportation facility, as we have identified. We truly stand poised to enter a worthy future of unique standing for the School.



N Slesser Babu  
Referral English Medium High School



## Our School - Referral English Medium High School

REMHS was founded in 2003 by Rural India Self Development Trust (RISDT) and managed by Matina Educational Society. The school's existence is attributed to FAIRMED and its long-term vision of serving and meeting medical and educational needs of people under RISDT project area. The school is situated on Chennai-Kolkata highway at Kathipudi, East Godavari district of Andhra Pradesh. The school has a vast campus spread across over Five Acres of land nestled in the bosom of Mother Nature with hills behind it. The school has an approximate built-up area of 40000 sq.ft with three storied blocks.



## Our Vision

We aim for a 3-Dimensional development of every student to help successfully face the competitive world on own. The academics, games & sports, co-curricular activities and hobbies are designed intricately to promote the highest standards in all respects of the curriculum. We aim to identify every student's potential and provide appropriate resources for the fulfillment of that potential.

## Governance and Organization

The school is managed and maintained by well regarded leaders in the area of administration, Academics and Development. Advisory Committee has been formed to advise the School on areas of strategic importance to the future development of the School, including and not limited to School policies, scientific directions, social inclusion and the performance enhancement of teachers and students.

## Academic Constitution

The school is affiliated to Andhra Pradesh Board Of secondary Education, the authority which conducts the Secondary School Certificate (SSC) examination for class Ten. The school is recognized and currently offers the following classes:

- An elementary education from class one to class three
- Primary education from class four to seven
- Secondary education from class eight to ten

The outgoing students of the school possess basic qualification eligible to pursue both vocational-technical education and higher studies with a choice of stream.

Typically, the school year starts in the month of June and ends April next with annual examination. The entire year is divided into three terms with short vacations in between. Student promotion is based on the collective marks scored in the term and final exams besides the attendance record.

## Our Staff

The quality and stability of the staff is pivotal. With our recent additions, we have over 50 members as staff that are qualified and experienced in all the important areas. The school was successful in attracting the best resources with its concurrent training programs to maintain the excellence that makes REMHS distinctive in the region.



## Our Notable Facilities

- ❖ Audio/Video classroom
- ❖ Library
- ❖ Spacious Playground
- ❖ Scholarship
- ❖ Transport
- ❖ Hostel
- ❖ Computer Labs
- ❖ Science Laboratories
- ❖ Events calendar
- ❖ Medical room
- ❖ Green House
- ❖ Arts room



## Our Distinctive Curriculum Offerings

Our curriculum offerings are focused on our vision of three-dimensional holistic development to prepare students for adult life. Programs are offered under the three curriculum organizers:

### 1. Academic curriculum essential for Secondary School Certificate (SSC):

- English Language: the school's language of instruction
- Other Languages: Telugu (native) and Hindi (national language) to be learned
- Humanities – Social Sciences: Geography, History and Economics
- Sciences: Biology, Chemistry, Physics
- Mathematics: one course including five branches of mathematics: Number, Algebra, Geometry and Trigonometry, Probability, Statistics, and Discrete Maths
- Arts: Visual arts and Performing arts
- Physical Education: A wide range of physical activities such as dance, self-defense, sports and games
- Technology: Computer and Multimedia

### 2. Physical Development, Leisure and Recreation: Optional classes for Drama, Music, Painting and Sports coaching.

### 3. Life Skills, Community Awareness, Ethics and Attitudes: Interactive sessions on Self-Awareness, Values, Self-learning and Critical Thinking.



## Our Teaching Methodology and Practices

REMHS is on the forefront in understanding and utilizing the newest & most effective techniques appropriate to each subject. Our trained teachers recognize each student's learning abilities and meet their needs with precision.

Limited number of students in each class is allowed to help teacher facilitate active learning and mentor students with personalized attention and care.

Use of audio-visual aids, interactive, continuous comprehensive evaluation are some of the methods. Special and extra classes for slow learners, coaching by subject experts, weekly tests, rigorous practice aided by reference books and question banks, student vigil and correction are some of the proven ways implemented to maximize learning with meritorious results.

## Teaching Quality and Enhancement Program

Professional development of our in-service teachers is a priority to ensure they adapt and practice best teaching models and strategies for the outstanding results that we always aim. During the year 2010, we have arranged Workshops and Interactions with various subject specialists from Swiss. A total of six programs were delivered by the visiting guest teachers from Switzerland. Each program was a valuable and enriching experience to our teachers and students alike.



## Nurturing Student for Life

School can be a student's window to the outside world; hence, a training ground to face it confidently. Our three-dimensional approach offers students to participate in co-curricular and extra-curricular activities. These activities allow students to explore their interests and cultivate their talents. More than a way to explore individuality, and a practical application of class room knowledge transfer from school into the "real world".

The wide ranges of following activities have been implemented as part of academic calendar for the year 2010:

- Public Speaking
- Community Awareness and Involvement
- Field Observational Visits
- Competitions in the area of Creativity and Expression
- Student Leadership and Civic Responsibilities
- Sports and Games –Indoor and Outdoor
- Observe and celebrate special and important days

Such activities have not only provided fun but also instructed students with lessons that will last them a lifetime! Additionally, we have introduced co-teacher and mentor concept to give students a wider access to interact and learn from multiple sources.



## School Profile for 2010 and Goals for 2011

Total Student enrolments at REMHS

Total Enrolment	Boys	Girls
1332	718	614

Key Performance Outcomes for 2010

Performance Particulars	Result
% of students passed the SSC board exams	100
% of class who secured more than 70% in the SSC exams	86
Highest marks secured by a REMHS student in board exam	557/600
Ratio of Teacher to Student	1:33
% of parents satisfied child's education at school	91
% of school staff satisfied with professional development opportunities and systematic initiatives	90

Key additions made for 2010 and Goals for 2011

Particulars	Achieved for 2009-10	Goals for 2010-11
Staff Recruited as of 2010/ Estimated recruits	54	06
Purchase of equipment and machinery for school/ Estimated requirement	Two buses	Three buses
Built area / Planned expansion	36766 Sq.ft	1320 Sq.ft
Students benefited by scholarships and concessions / Students eligible for 2011-12	268	300

We are exploring all the possible means to achieve and exceed the goals for 2011. In this endeavor, we seek to work closer with our staff, student-parent community, partners and the district board to realize the goals.



## Key Challenges

For REMHS, the inadequate transportation is both a challenge and an opportunity.

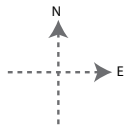
Currently, the school operates eleven carriers of varied seating capacity to pick and drop students from 136 villages surrounding the school. This is a meager effort in the face of the demand and aspiration of the parents from other parts of the region. Many more parents want to access the affordable quality education being provided by REMHS School. The biggest challenge is to provide transport facilities to students of left out villages. This not only deprives the community of quality education but also results in social imbalance. The route map on the next page is the service area of our vehicles.

With the challenge comes the opportunity to press for more vehicles to help nearly 136 villages to access the affordable education from Referral School. It will be a step forward for many villages and parent community wanting to give their children the best education. To close the gap, we are eager to partner with those who see our concern for the lost villages and students to bring them into the ambit of better future.

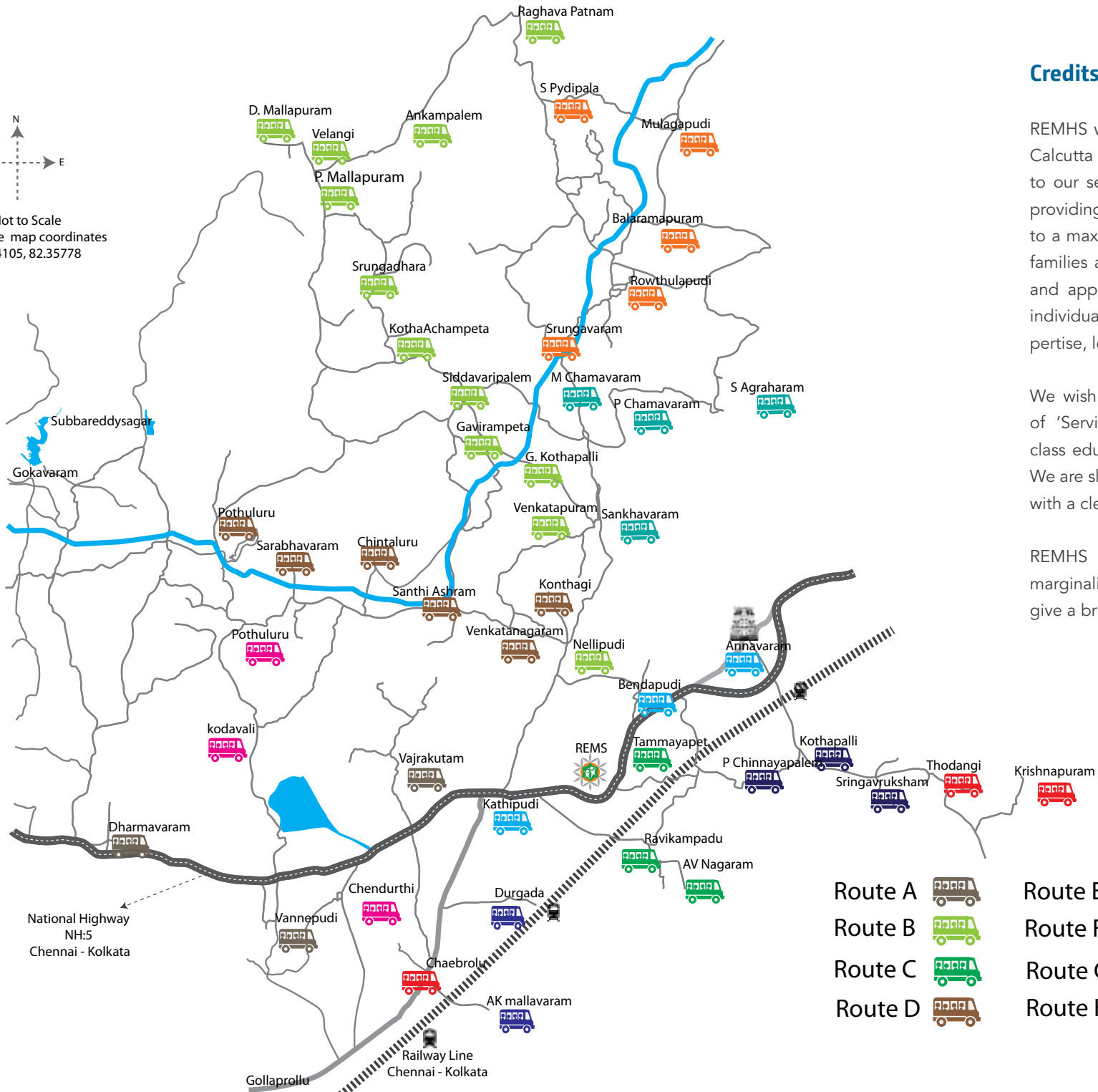
Transportation facility as of 2010 and Goals for 2011

Particulars	Data as of 2010	Goals for 2010-11
Total no. of carriers/ To be procured	11	03
Total villages covered by the service/ Identified to cover for 2011-12	136 with 45 service points	15 new points
Daily distance covered by carriers / To be covered	40 Kms radius	40 Kms radius
% of Students avail transport facility	75	90
Estimated increase in enrolment if the facility is given*	NA	180

\*Based on inputs from promotional field visits and feedback



Map Not to Scale  
google map coordinates  
17.244105, 82.35778



- |         |  |         |  |         |  |
|---------|--|---------|--|---------|--|
| Route A |  | Route E |  | Route I |  |
| Route B |  | Route F |  | Route J |  |
| Route C |  | Route G |  | Route K |  |
| Route D |  | Route H |  |         |  |

## Credits and Closing

REMHS will remain grateful to ACCENTUS Foundation, Calcutta Espoir and FAIRMED for their generous support to our services in the rural area to achieve our goal of providing high quality education at an affordable cost to a maximum number of poor, children of middle class families and stigmatized patients. We also acknowledge and appreciate the support of our other partners and individuals who fervently support our vision with their expertise, leadership and resources.

We wish to assure you that will stay true to our vision of 'Service through Excellence' and bring corporate-class education to the poor and developing community. We are slowly but surely inching forward toward our goals with a clear progress on all fronts.

REMHS re-dedicate itself to impact the children of marginalized communities with light of the knowledge to give a bright future.

Rural India Self Development Trust

Post Box No. 56, 90-1-5/1, Swaraj Nagar, Alcot Gardens, Rajahmundry  
533 101, E.G.Dt. Andhra Pradesh, India. Phone: +91 883 242 53 67.

Referral Hospital (Community Health Center) (Rural India Self Development Trust)  
Seetayammepeta, Sankavaram Mandalam, E.G.Dt.  
Andhra Pradesh India. Phone: +91 8868 234 408.

Referral English Medium High School (Rural India Self Development Trust)  
Tammayyapeta, Thondangi Mandalam, E.G. Dt.  
Andhra Pradesh, India. Phone: +91-8868 234 810

risdtindia@gmail.com  
www.risdt.org  
www.kalpavruksha.ch (German)



Rural India Self Development Trust

Rajahmundry, Andhra Pradesh

